

# Enfield Local Plan: 2019-2039

Environment Forum  
23-November 2022

Brett Leahy  
Director of Planning and Growth

[www.enfield.gov.uk](http://www.enfield.gov.uk)

Striving for excellence



# Purpose of the session

- Where we were then
- Where we are now
- Next steps



Where we were then...

**2020-21**

# Just a reminder...

- A new spatial vision
- Spatial strategy
- 10x Place based policies
- 36x strategic policies
- 57x non-strategic policies
- 62x draft Site Allocations

**TOTAL = 155 policies**

- 4x Appendices

EGM approval to consult – Jun-21

Consultation Jun-Sep-21



The image shows a Facebook post from Enfield Council. The post header includes the Enfield Council logo, the name 'Enfield Council', and the text 'Published by Andrew Golder · 22 June ·'. The main text of the post reads: 'Give us your views on the Enfield of tomorrow, today! Themes include housing, jobs, sustainability, economy, health, green spaces, transport, town centres and more. For further information and to take part in the Local Plan consultation visit 'Learn more'.' Below the text is a large graphic with a red and yellow background. The graphic features the text 'FUTURE ENFIELD' in large, bold letters, with 'FUTURE' in blue and 'ENFIELD' in yellow. To the right of 'ENFIELD' is a yellow arrow pointing right. Below this, the text 'HOUSING, JOBS, SUSTAINABILITY, ECONOMY, HEALTH, GREEN SPACES, TRANSPORT, TOWN CENTRES AND MORE.' is written in various colors. To the right of the graphic is a blue box with the text 'GIVE US YOUR VIEWS ON THE ENFIELD OF TOMORROW, TODAY!' and a link 'Visit our Local Plan consultation on letstalk.enfield.gov.uk/localplan'. Below the graphic is a grey box with the URL 'LETSTALK.ENFIELD.GOV.UK', the title 'Future Enfield', and the text 'The Enfield Local Plan 2019-2039 will be the key planning policy document f...'. There is a 'Learn More' button to the right of this text. At the bottom of the post, there are icons for likes, comments, and shares, with the number '106' next to the likes icon, and '279 comments 18 shares' on the right.

# Evidence base



Home > Services > Planning and building > Evidence base

## Evidence base

Evidence and information we use to create and inform the Local Plan is known as the evidence base. You can read and download many of the documents that form our evidence base using the links below.

### Good growth in Enfield

- [Growth Topic Paper \(LBE\) 2021 \(PDF, 2174.84 KB\)](#)

### Place

- [Chase Park Topic Paper 2021 \(PDF, 5947.44 KB\)](#)
- [Crews Hill Topic Paper 2021 \(PDF, 5395.45 KB\)](#)

### Blue and Green Enfield

- [Enfield Burial Needs Assessment \(cremation and burial\) \(Enzygo\) 202 \(PDF, 8091.12 KB\)](#)
- [Enfield Burial Space Study \(Enzygo\) 2020 \(PDF, 3924.54 KB\)](#)
- [Enfield Blue and Green Infrastructure Audit 2020 \(PDF, 146601.89 KB\)](#)
- [Review of Enfield Biodiversity Action Plan 2021 \(PDF, 8464.09 KB\)](#)
- [Review of Sites of Importance for Nature Conservation Report 2020 \(PDF, 13482.81 KB\)](#)
- [Review of Sites of Importance for Nature Conservation Report 2020 appendices A-C \(PDF, 11045.55 KB\)](#)
- [Review of Sites of Importance for Nature Conservation Report 2020 appendix D \(PDF, 3108.56 KB\)](#)
- [Blue and Green Infrastructure Strategy 2021 \(PDF, 18561.77 KB\)](#)
- [Level 1 Strategic Flood Risk Assessment Flood Map 2021 \(PDF, 10712.29 KB\)](#)
- [Level 1 Strategic Flood Risk Assessment report 2021 \(PDF, 13784.33 KB\)](#)
- [Level 2 Strategic Flood Risk Assessment - Initial Site Assessment \(BMT Global\) 2021 \(PDF, 727.4 KB\)](#)
- [Level 2 Strategic Flood Risk Assessment - Appendix A - SA1 to SA10 \(PDF, 11671.73 KB\)](#)
- [Level 2 Strategic Flood Risk Assessment - Appendix A - SA11 to SA20 \(PDF, 12344.27 KB\)](#)
- [Level 2 Strategic Flood Risk Assessment - Appendix A - SA21 to SA30 \(PDF, 9336.29 KB\)](#)
- [Level 2 Strategic Flood Risk Assessment - Appendix A - SA31 to SA40 \(PDF, 10003.46 KB\)](#)
- [Level 2 Strategic Flood Risk Assessment - Appendix A - SA41 to SA50 \(PDF, 8179.83 KB\)](#)
- [Level 2 Strategic Flood Risk Assessment - Appendix A - SA51 to SA62 \(PDF, 10246.37 KB\)](#)
- [Level 2 Strategic Flood Risk Assessment - Appendix B - Site Assessment Summary and Overview \(PDF, 5149.29 KB\)](#)
- [Level 2 Strategic Flood Risk Assessment - Appendix C - NPPF Technical Guidance Tables \(PDF, 392.7 KB\)](#)
- [Green Belt and MOL Assessment\\_Exec Summary \(LUC\) 2021 \(PDF, 6549.57 KB\)](#)
- [Green Belt and MOL Assessment\\_Final Report \(LUC\) 2021 \(PDF, 11704.52 KB\)](#)
- [Green Belt and MOL Assessment\\_Appendices\\_Part 1 \(LUC\) 2021 \(PDF, 14530.5 KB\)](#)
- [Green Belt and MOL Assessment\\_Appendices\\_Part 2 \(LUC\) 2021 \(PDF, 11594.24 KB\)](#)
- [Green Belt and MOL Assessment\\_Appendices\\_Part 3 \(LUC\) 2021 \(PDF, 15115.66 KB\)](#)
- [Green Belt and MOL Assessment\\_Appendices\\_Part 4 \(LUC\) 2021 \(PDF, 12612 KB\)](#)

- Over 90 pieces of evidence
- Integrated Impact Assessment and Habitats Regulations Assessment

### Design and character

- [Character of Growth Report - Stage 1, 2 and 3 \(2021\) \(PDF, 12636.7 KB\)](#)
- [Character of Growth Scale of Change Map - Rev-A \(2021\) \(PDF, 11041.97 KB\)](#)
- [Character of Growth Scale Stage 2 - Assessment Table - Rev-A \(2021\) \(PDF, 302.75 KB\)](#)
- [Character of Growth Scale Stage 2 - General Assessment Table - Rev-A \(2021\) \(PDF, 340.71 KB\)](#)
- [Character of Growth Scale Tall Buildings Definition Map - Rev-A \(2021\) \(PDF, 12866.22 KB\)](#)
- [Character of Growth Scale Tall Buildings App Locations - Rev-A \(2021\) \(PDF, 525.93 KB\)](#)
- [Character of Growth Scale Typology Map - Rev-A \(2021\) \(PDF, 15214.66 KB\)](#)
- [Enfield Characterisation Study - Parts 1 to 4 \(PDF, 14775.24 KB\)](#)
- [Enfield Characterisation Study - Part 5 to 6 \(PDF, 16373.18 KB\)](#)

### Homes for all

- [Enfield Strategic Housing Land Availability Assessment \(2020\) \(PDF, 9521.53 KB\)](#)
- [Enfield SHLAA Methodology \(2020\) \(PDF, 402.72 KB\)](#)
- [Draft SHLAA Methodology Consultation Statement \(2020\) \(PDF, 477.88 KB\)](#)
- [Enfield's Strategic Housing Market Assessment \(SHMA\) \(2015\) \(PDF, 2193 KB\)](#)
- [Enfield Capacity Study Policy Review \(2020\) \(PDF, 1369.33 KB\)](#)
- [Enfield Capacity Study Site Identification \(2020\) \(PDF, 1052.08 KB\)](#)
- [Enfield Local Housing Needs assessment \(full report\) \(2020\) \(PDF, 6123.96 KB\)](#)
- [Enfield Local Housing Needs \(executive summary\) \(2020\) \(PDF, 348.53 KB\)](#)
- [Enfield Gypsy and Travellers Assessment \(2020\) \(PDF, 845.11 KB\)](#)
- [Enfield Housing Numbers Paper 2021 \(PDF, 251.79 KB\)](#)
- [Housing Topic paper - all appendices 2021 \(PDF, 1232.82 KB\)](#)
- [Housing and Economic Land Availability Assessment 2021 \(PDF, 16137.22 KB\)](#)
- [Housing and Economic Land Availability Assessment - Appendix E - Raw Data \(XLSX, 480.59 KB\)](#)
- [Housing and Economic Land Availability Assessment - Appendix F - Raw Data \(Shape Files\)](#)

### Economy

- [Employment Land Review \(2018\) \(PDF, 3854.67 KB\)](#)
- [Industry in Enfield \(2017\) \(PDF, 9279.42 KB\)](#)
- [Socio-Economic Assessment \(2017\) \(PDF, 3508.03 KB\)](#)
- [FEMA \(2020\) \(PDF, 463.86 KB\)](#)
- [Enfield Industrial Intensification \(2020\) \(PDF, 3410.82 KB\)](#)
- [Enfield Industrial Intensification Study \(2020\) Industrial Sites Database \(XLSX\)](#)
- [AECOM final draft Enfield Industrial Intensification report \(2020\) \(PDF, 2098.18 KB\)](#)
- [AECOM final draft Enfield Industrial Intensification report appendices \(2020\) \(PDF, 14966.01 KB\)](#)
- [Enfield Employment Topic Paper 2021 \(PDF, 439.9 KB\)](#)

### Town centres and high streets

- [Enfield Retail Need Assessment Update \(2018\) \(PDF, 1242.54 KB\)](#)
- [Enfield Town Centre Healthchecks and Boundary Reviews \(2021\) \(PDF, 1896.29 KB\)](#)
- [Enfield Retail and Leisure Study Update \(2021\) \(PDF, 605.97 KB\)](#)

### Movement and connectivity

- [Transport Assessment Executive Summary \(WSP\) 2021 \(PDF, 164.81 KB\)](#)
- [Transport Baseline Review Report \(WSP\) 2021 \(PDF, 7372.21 KB\)](#)
- [Transport Baseline Review Report \(WSP\) 2021 - Appendix A \(PDF, 11627.76 KB\)](#)
- [Transport Baseline Review Report \(WSP\) 2021 - Appendix B \(PDF, 449.59 KB\)](#)
- [Transport Baseline Model Study Areas \(WSP\) 2021 \(PDF, 5513.66 KB\)](#)
- [Transport Future Baseline Report \(WSP\) 2021 \(.0 KB\)](#)
- [Transport LoHAM Base Model Audit \(WSP\) 2021 \(PDF, 10671.96 KB\)](#)
- [Transport Technical Note Future Baseline - Forecasting Assumptions \(WSP\) 2021 \(PDF, 1127.45 KB\)](#)

### Environmental protection

- [Air Quality Appraisal Vol 1 \(WSP\) \(PDF, 306.05 KB\)](#)
- [Air Quality Appraisal Vol 2 \(WSP\) \(PDF, 6439.02 KB\)](#)
- [Air Quality Appraisal Vol 3 \(WSP\) \(PDF, 279.73 KB\)](#)

### Infrastructure planning

- [Draft Infrastructure Delivery Plan \(LBE and Inner Circle\) 2021 \(PDF, 1231.57 KB\)](#)

### Whole plan

- [Enfield Whole Plan Viability \(HDH Planning\) Report 2021 \(PDF, 6552.87 KB\)](#)
- [Enfield Whole Plan Viability \(HDH Planning\) Appendices 2021 \(PDF, 12900.33 KB\)](#)

### Consultation

- [Enfield Regulation 18 2018-19 consultation statement May 2021 \(PDF, 652.36 KB\)](#)

with the IIA documents:

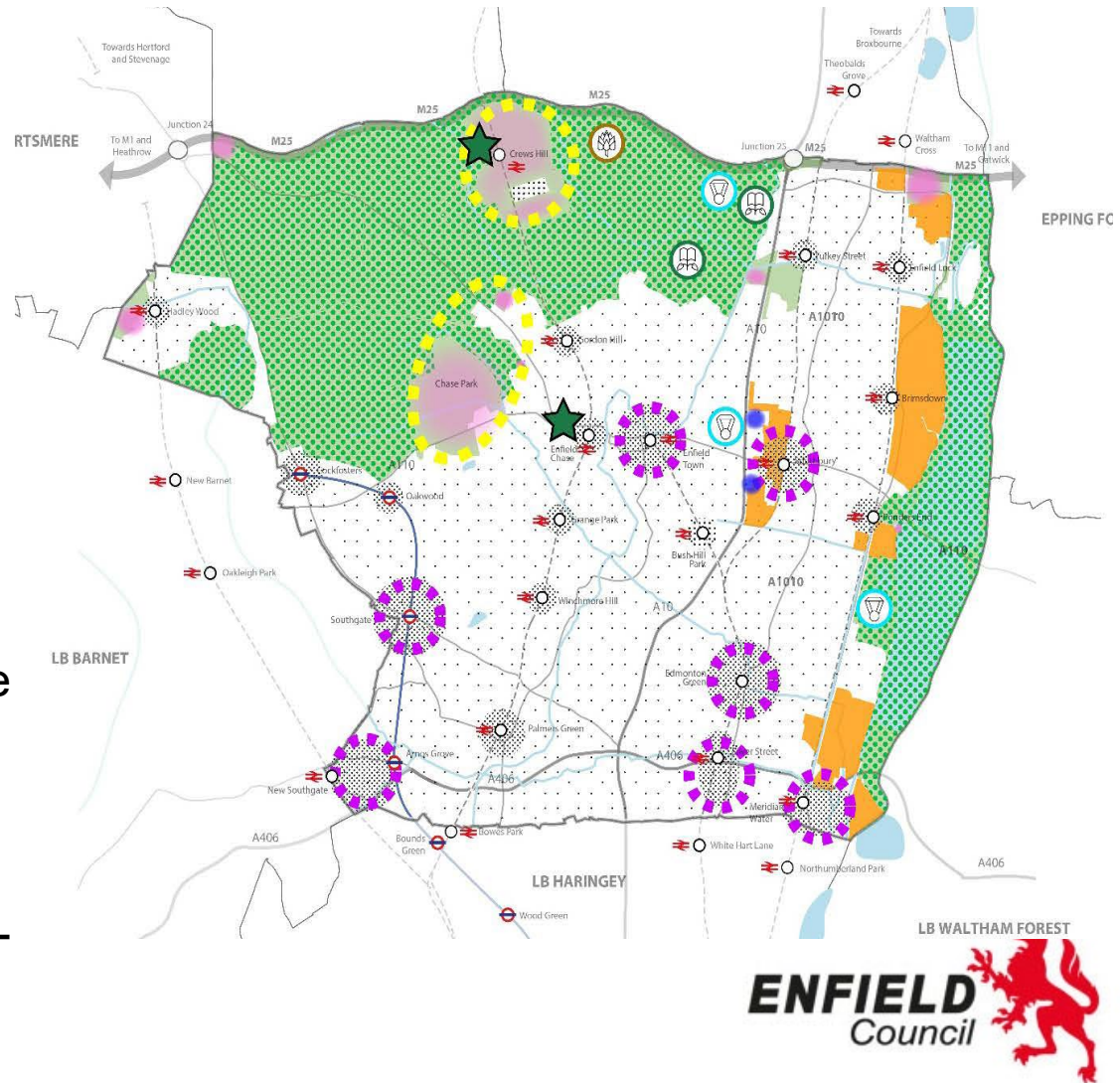
- [Integrated Impact Assessment \(LUC\) 2021 \(PDF, 5961.73 KB\)](#)
- [Integrated Impact Assessment - Appendices \(LUC\) 2021 \(PDF, 6337.92 KB\)](#)
- [Habitats Regulations Assessment \(LUC\) 2021 \(PDF, 9855.33 KB\)](#)

<https://www.enfield.gov.uk/services/planning/evidence-base>



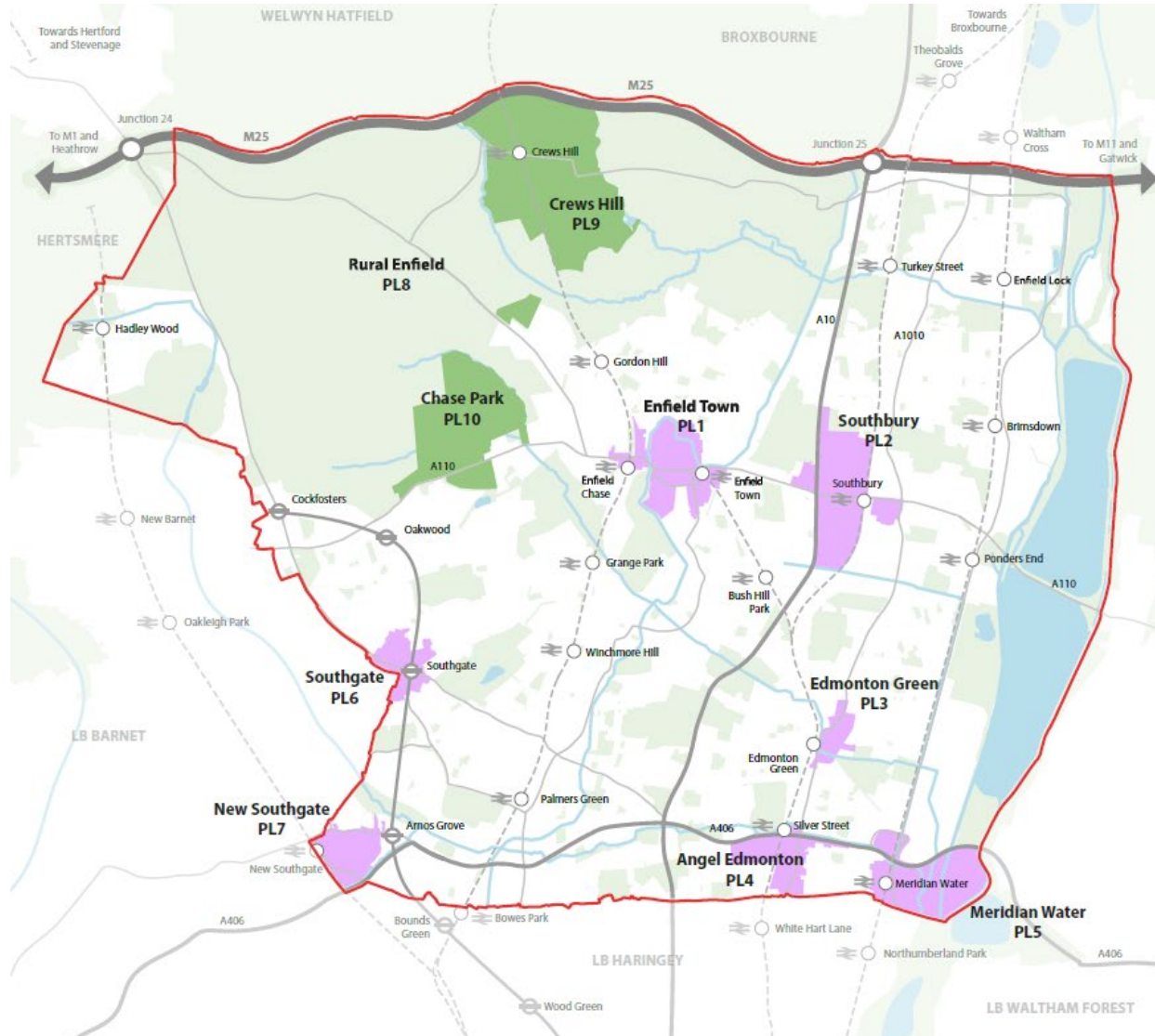
# 2021 Spatial Strategy

- 25,000 homes – and a wider mix of housing including family homes
- Focused in the urban areas with two in the rural areas
- Meets most employment needs (but old ELR) of 25.1ha
- No SIL release
- Some Green Belt release
- Environmental enhancement of rural areas
- Future proofing and long-term planning





# Placemaking areas in Enfield



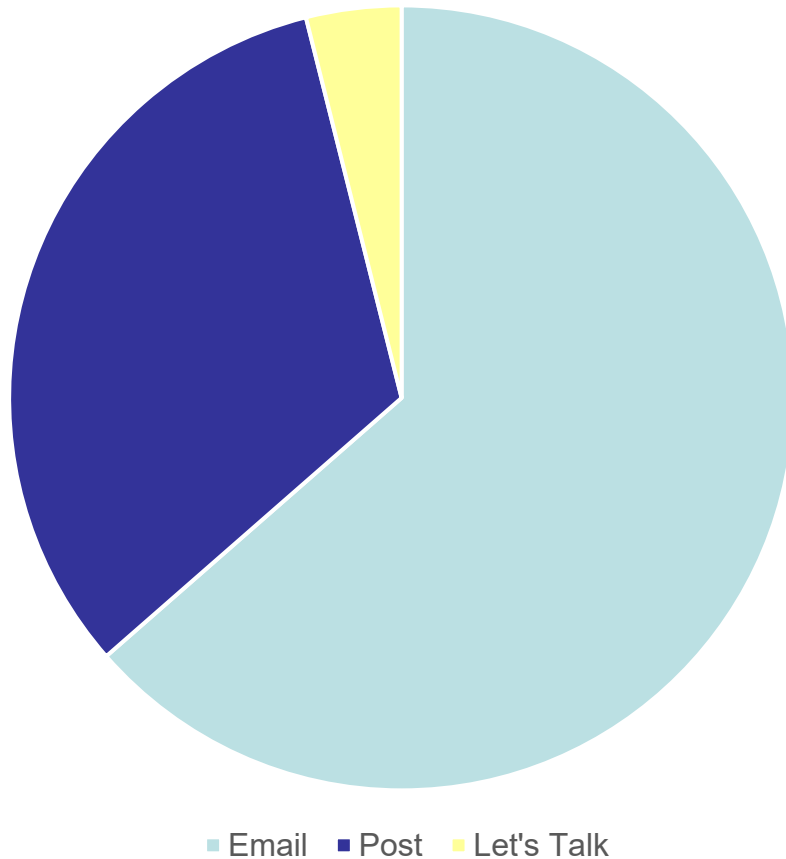
Where we are now

**2021-22**



# Reg-18 responses

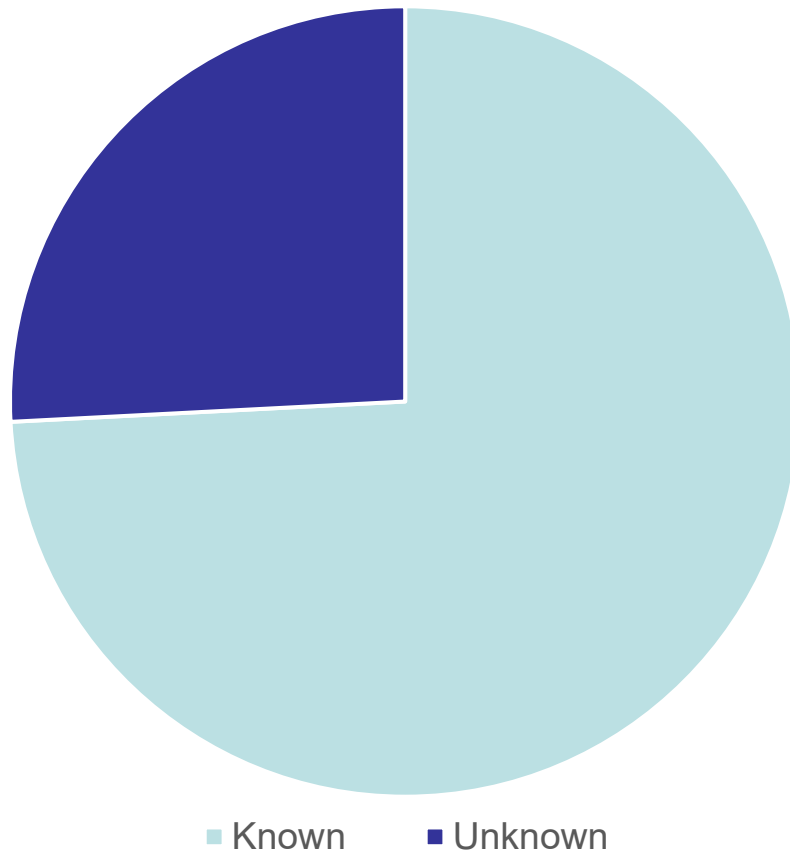
Method of representation



## 7,267 total response

- Email reps: 4,619
- Postal reps: 2,363
- Let's Talk: 285

# Where did we get responses from

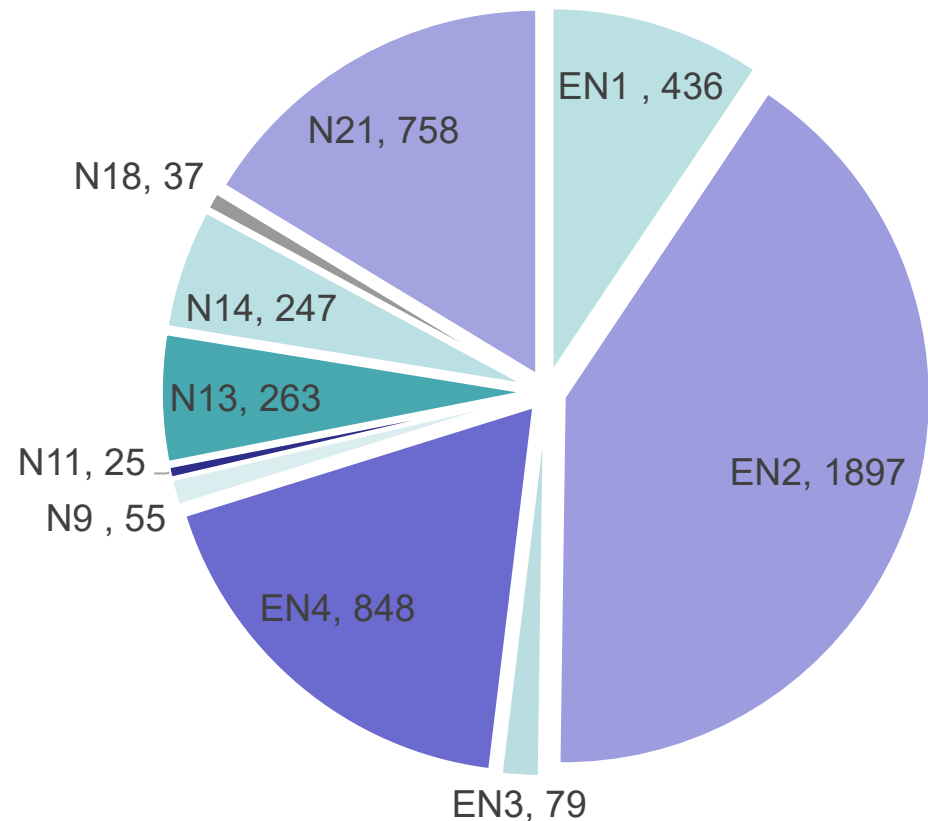


We don't know where *all* responses came from.

... but we do have postcodes for most – about three quarters of responses.

# Where did the Enfield responses come from?

- Most individual responses came from EN2 41% i.e. Crews Hill, World’s End, Botany Bay and Chase
- 18% originated in EN4 –i.e. Barnet – but Hadley Wood and Cockfosters
- 16% originated in N21 – i.e. Winchmore Hill, Bush Hill (part), Grange Park.
- Only 2% originated in N18 (upper Edmonton) and N9 (Edmonton)



■ EN1 ■ EN2 ■ EN3 ■ EN4 ■ N9

# High level summary – borough wide

- Need for additional housing
- Appropriateness of preferred housing target
- Support for proposed affordable housing targets
- Concerns around deliverability of affordable housing targets
- Opposition and support for Green Belt release
- Opposition to Tall buildings (particularly in Enfield Town)
- Need to ensure sufficient infrastructure to support the level of proposed growth
- Support and opposition to Crews Hill and Chase Park policies
- Loss of large format food stores and associated car parking
- Opposition to proposed development of Firs Farm rec, Sainsburys Green Lanes, Camlet Way site Hadley Wood.

# What's been happening since we consulted?

- Busy times!
- Analysing over 7,000 reps
- Updating key pieces of evidence:
  - Character of Growth
  - Housing and Employment Land Availability Assessment
  - Updating Employment Land Review
  - New Retail Needs Assessment – published
  - Initial Transport Assessment – testing assumptions and growth scenario

# Local Development Scheme



- Programme setting out plan preparation
- Now out of date
- Holding statement on website
- Intention to publish a revised LDS early next year

## Local Development Scheme

### Enfield Local Plan Update (September 2022)

Work continues on the preparation of the draft Enfield Local Plan, with further workstreams being undertaken on a number of key evidence base documents including, an update to the Housing and Economy Land Availability Assessment (following the most recent Call for Sites in July 2022), Employment Land Review, the Transport Assessment and continued cross boundary working.

Due to this ongoing work, the timetable set out in Enfield's current [Local Development Scheme \(PDF, 271.25 KB\)](#) is no longer applicable.

An updated Local Development Scheme will be published in early 2023 providing updated timescales for the publication of the proposed submission plan (Regulation 19), and submission timetable.

<https://www.enfield.gov.uk/services/planning/local-development-scheme>





Where we're going

**2022-23**

# Next steps



- Further engagement with stakeholders
- Refinement of spatial strategy, strategic policies and detailed policies
- Finalise the consultation statement and publish representations before next plan
- Publish Housing and Employment Land Availability Assessment – Mar-23
- Progress transport assessment Nov-22 to Mar-23
- Progress Employment Land Review Oct-Dec-22
- Progress Authority Monitoring Report (21/22) and update Five Year Housing Land Supply Mar-Apr-23
- Revise Statement of Community Involvement by Mar-23
- Update Local Development Scheme Mar-23
- Refinement and testing of Plan Apr-Sep-23
- Seek approval to consult on Reg-19 Oct-Dec-23
- Consultation on Reg-19 early-24

# We'd like to hear from you

- Part of the consultation of the ELP
- Keen to hear from local experts to shape and refine policies to progress to Reg-19
- Very much a listening exercise – we want to make sure we get it right.

Brett Leahy  
Director of Planning and Growth

